



**Si necesita traducción al español,
diríjase a la entrada para obtener un auricular
para interpretación en vivo.**

**A presentation will begin approximately
at 5:30 p.m., followed by a Q&A.**

CN A301890





Public Meeting

Feb. 22, 2024

The presentation will be about 30 minutes and will be recorded and made available on the project website.



Agenda

- Presenters
- Project Overview
- Background & Schedule
- Design Concept
- Aesthetic Process
- Public Engagement
- Questions





Presenters





Adrianna Day

Facilitator





Greg Clarke

*NMDOT Project
Development Engineer*





Mike Worrall

Consultant Project Manager





Alonzo Martinez

Consultant Engineer





Project Overview



Improvements

- A new I-25 bridge over Gibson Boulevard, including a new interchange design.
- Minor enhancements to Gibson Boulevard between Edith Boulevard and University Boulevard.
- Additional lanes and ramp improvements along I-25 between Sunport Boulevard and Avenida Cesar Chavez.
- Improvements to bicycle and pedestrian facilities.



Background & Schedule



NMDOT Project Development





Aging infrastructure on I-25 over
Gibson Boulevard and a poor-performing
interchange configuration
makes this project a priority.

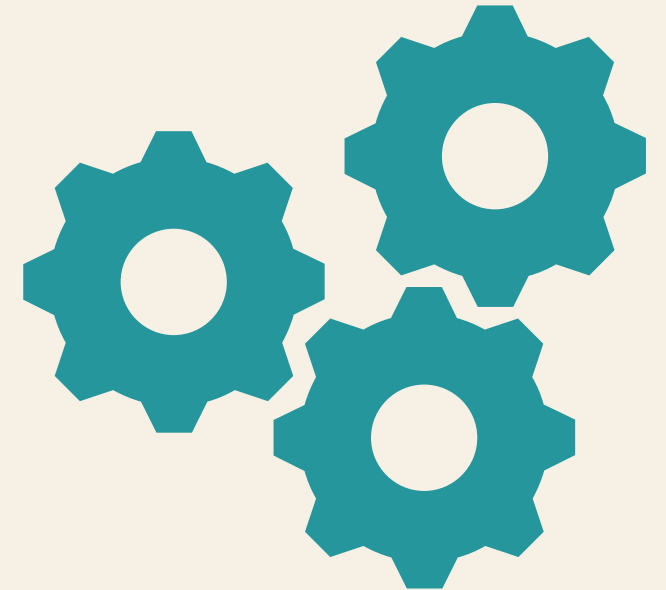


Design-Build Delivery

- 1 NMDOT will hire a design-build team
- 2 The selected team will design and construct the project under one contract



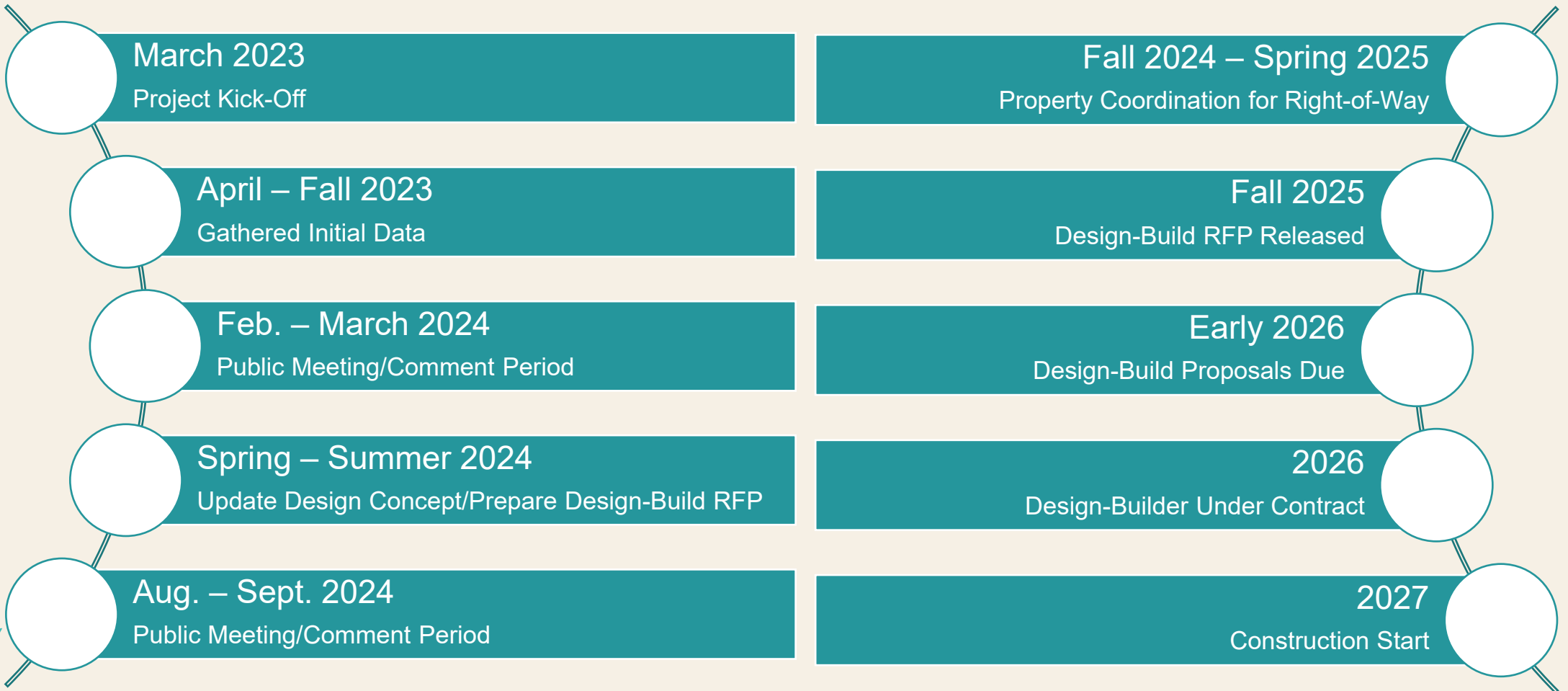
**Leads to innovation solutions
for the best value**





Schedule

The schedule is subject to change as the project progresses.





Design Concept

Design is subject to change and will be refined after public input and data analysis.



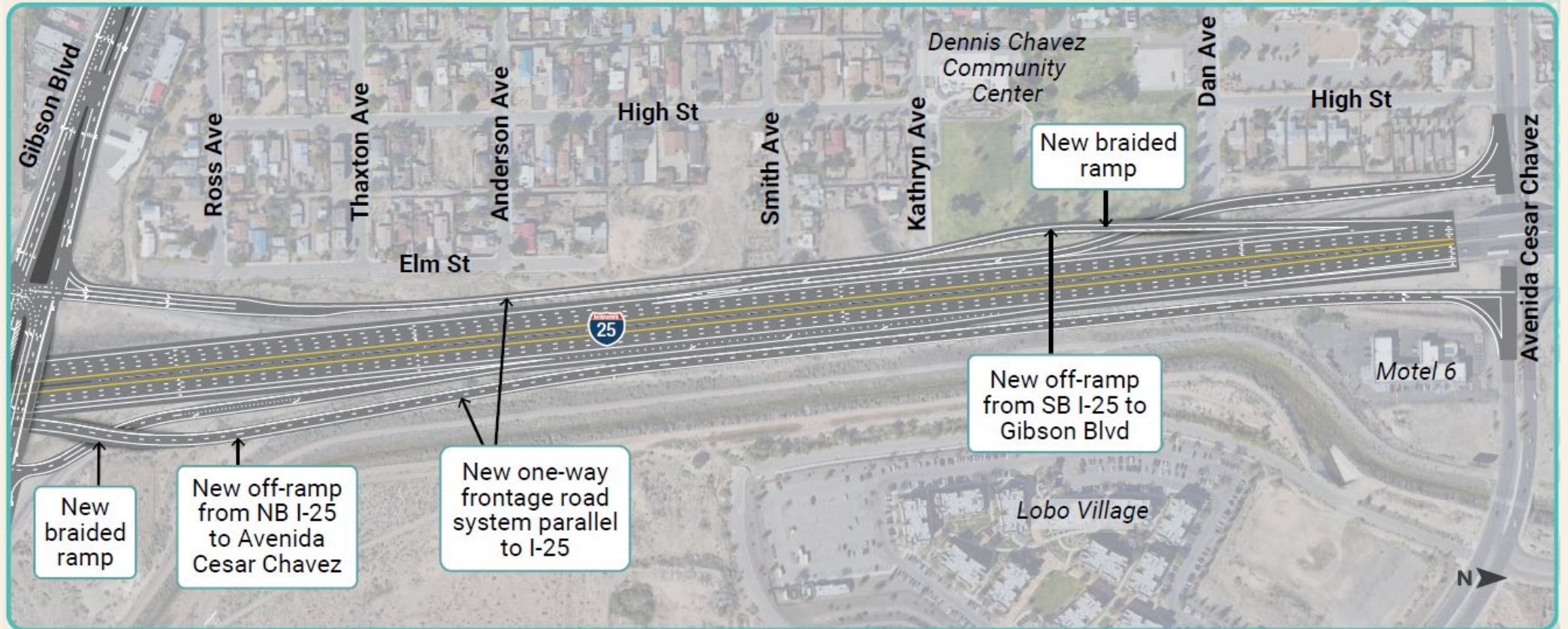
I-25; Sunport Boulevard to Gibson Boulevard



Design is subject to change and will be refined after public input and data analysis.



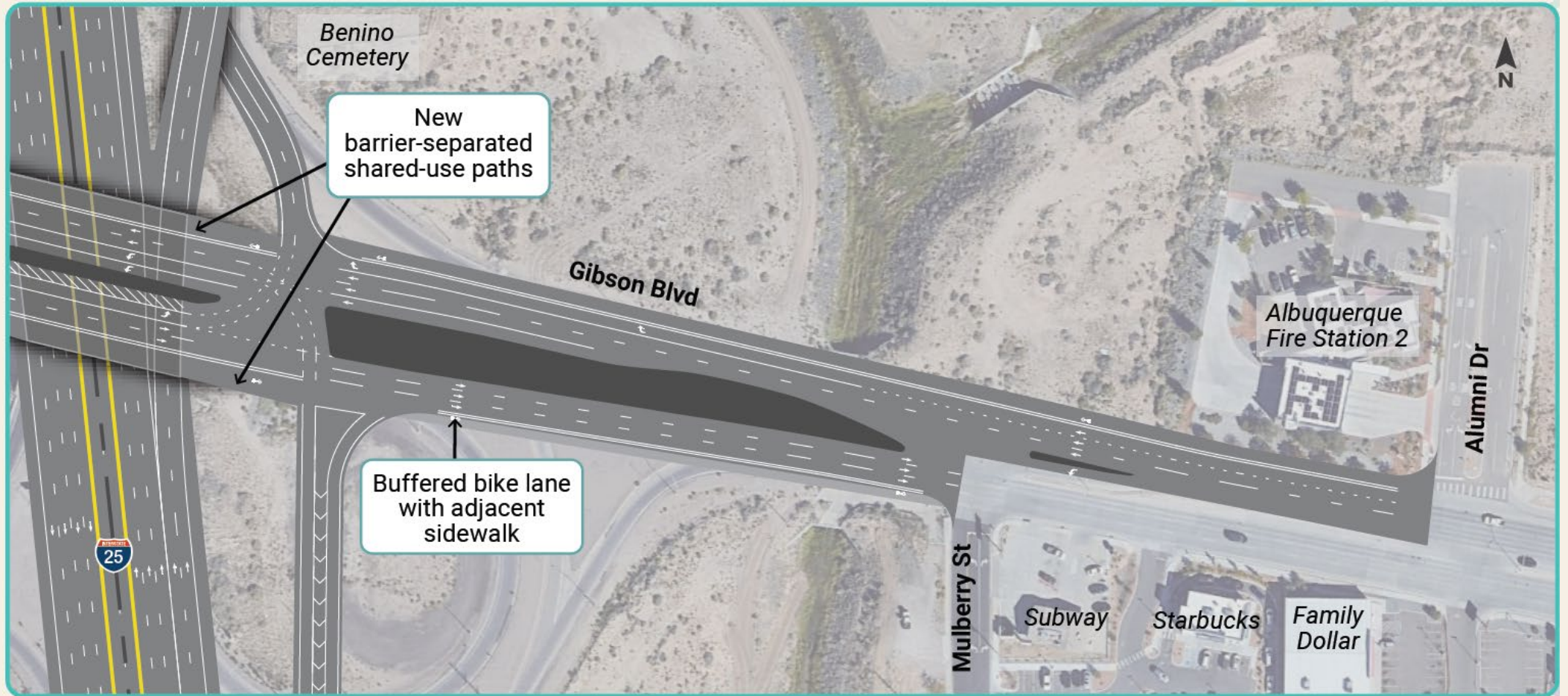
I-25; Gibson Boulevard to Avenida Cesar Chavez



Design is subject to change and will be refined after public input and data analysis.



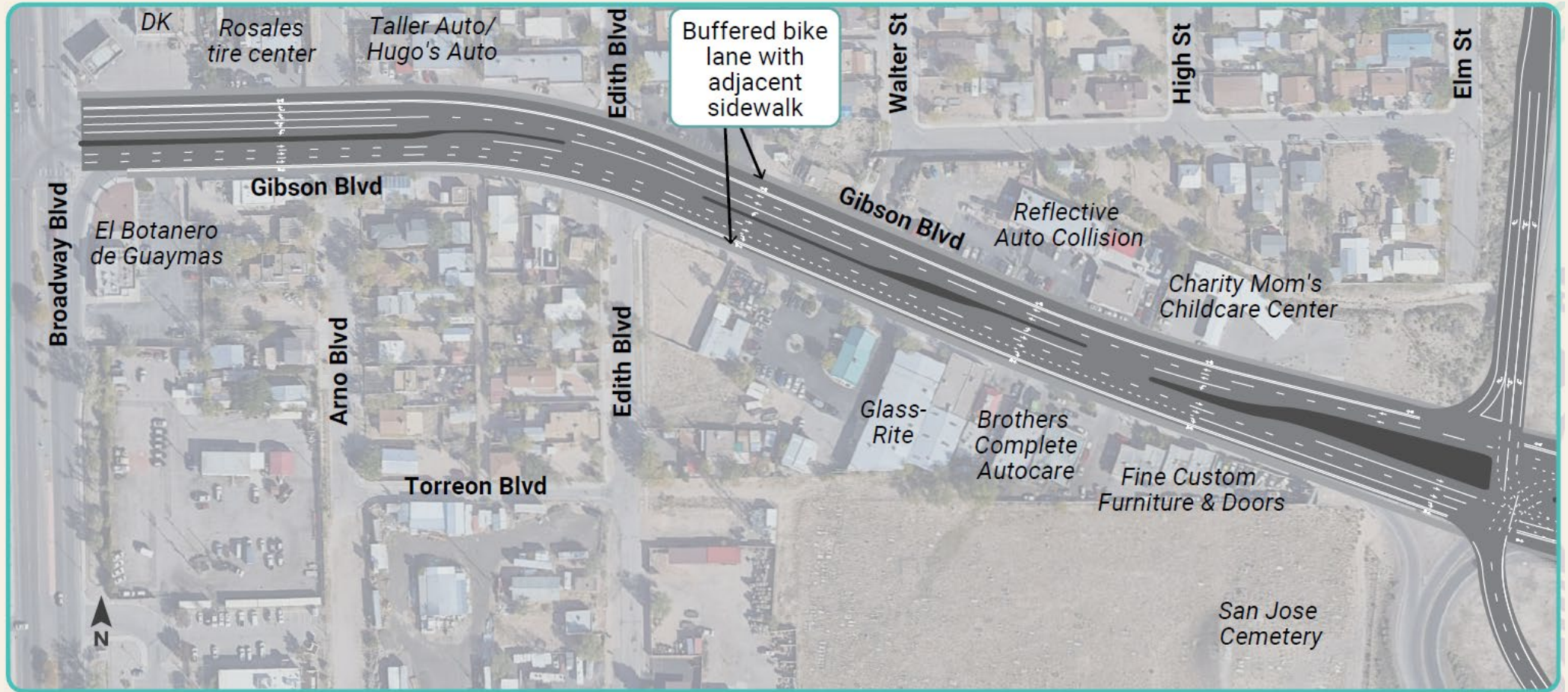
Gibson Boulevard; East of I-25



Design is subject to change and will be refined after public input and data analysis.



Gibson Boulevard; West of I-25



Design is subject to change and will be refined after public input and data analysis.



Impacts to Dennis Chavez Park



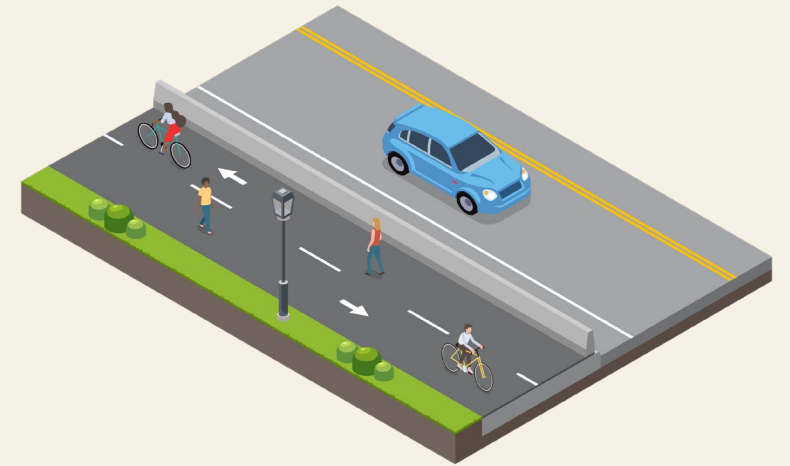
- 1 acre needed to accommodate new braided ramp
- Will affect shade trees at back of the park
- Mitigation measures will be addressed by the project
- Will not impact baseball field for future use

Design is subject to change and will be refined after public input and data analysis.



Gibson Boulevard Active Transportation

- Barrier-separated shared-use path at interchange
- Buffered bike lane with adjacent sidewalk east and west of interchange
- Project team is in close coordination with the City





Aesthetic Process



The NMDOT wants to ensure that while the project is providing a safe and efficient transportation system, **that improvements honor the local heritage, beauty and setting.**



Call For Entry (CaFÉ)



Tell us what you would like to see on your comment form!

The schedule is subject to change as the project progresses.





Public Engagement



How to Submit Public Comments

1. Today, in-person via a comment form or Q&A
2. Visit i25gibson.com and fill out the comment form (posted Feb. 23, 2024)
3. Email us at info@i25gibson.com
4. Call us at **505-535-4442**
5. Mail us a comment form at
I-25 Gibson Interchange Reconstruction Project
c/o Horrocks
6001 Indian School Road NE, Ste 250
Albuquerque, NM 87110

**Comment period
open through
March 24, 2024!**



Stay Involved



i25gibson.com



505-535-4442



info@i25gibson.com





Questions



Guidelines

- Keep questions to two minutes
- State your number that was provided prior to your question
- Be respectful of the attendee asking the question and of the team answering it





How to Submit Public Comments

1. Today, in-person via a comment form or Q&A
2. Visit i25gibson.com and fill out the comment form (posted Feb. 23, 2024)
3. Email us at info@i25gibson.com
4. Call us at **505-535-4442**
5. Mail us a comment form at
I-25 Gibson Interchange Reconstruction Project
c/o Horrocks
6001 Indian School Road NE, Ste 250
Albuquerque, NM 87110

**Comment period
open through
March 24, 2024!**